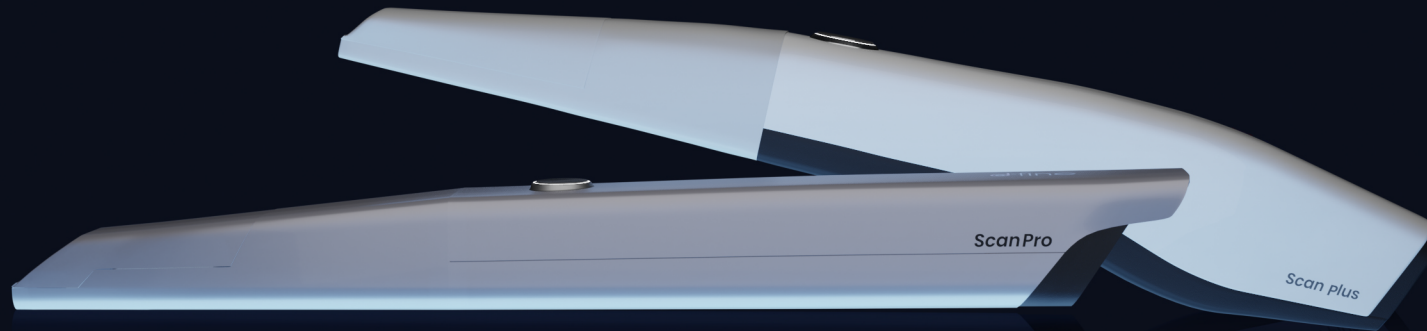


d-fine<sup>®</sup>

**Redefining**

digital dentistry

Ultrafast & Super Precise Intra Oral Scanner



DentCare<sup>®</sup>

**Revolutionary patented technology backed by**  
unparalleled support and service from **DentCare**<sup>®</sup>

**ofine<sup>®</sup> Scan plus**

## Button Control

The tiny button carries great responsibilities, controlling the entire digital workflow. It prevents cross contamination by not touching the screen or clicking the mouse. Safety is always the top priority.

## Motion Sensing

The gyroscope inside the scanner allows to see different angle of scanned images by just simply rotating the scanner. So you do not have to touch the screen to see the image.





## Parameters

**54** Sec

Full Arch Scanning

**5** Tips

With 3 Different Angles

**≤9** μm

More Precise

**≤10** μm

High Accuracy

**228** g

Aviation Aluminum Alloy

Overall Size	216 x 40 x 36 mm
Tip End	19.6 x 14.6 mm Autoclavable
Field of View	18 x 16 mm
Depth of Field	0~15 mm (Adjustable up to 20mm)
Patents	40+
Certificates	CFDA/CE/ISO13485/FDA/INMETRO/ANVISA, etc.
Interface	USB3.0
Data Output	STL PLY PTY *encrypted data available



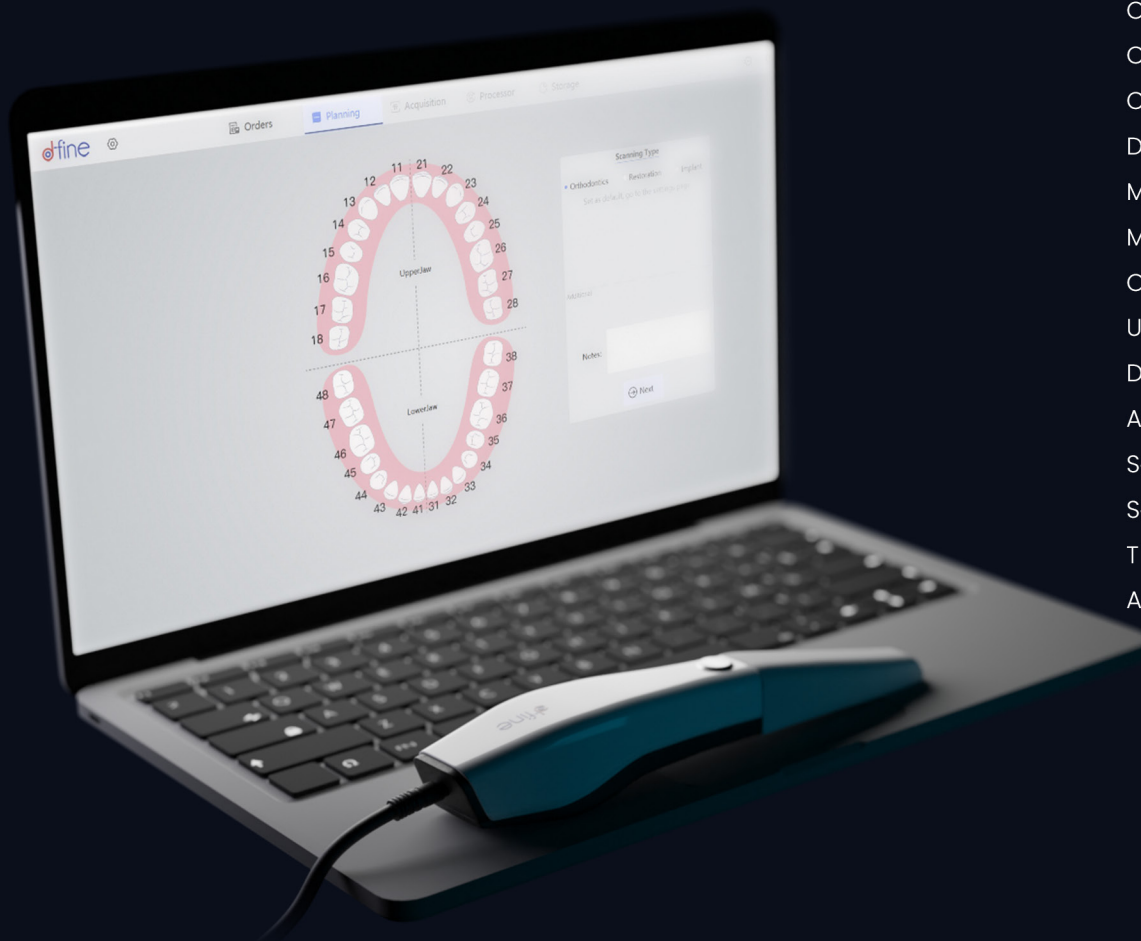
# Product Information

Technology	Staring Scanning with Coded Structure Light
Camera Number	x 3
Scan Field	18x16mm
Scan Depth	0-15 mm (Adjustable up to 20mm)
Accuracy	≤10μm
Precision	≤9μm
True Color	Full HD
Anti Fog System	Intelligent Heating
Full Arch Scanning Time	54 Seconds
Handpiece Enclosure	Aviation Aluminum Alloy
Handpiece Dimension	216 x 40 x 36 mm
Handpiece Weight	228g
Tip Types 3 types	(N/M/D)
Number of Tips included	x 5 (Autoclavable)
Tip Autoclave Cycle	20-50 times
Calibrator	Automatic
Scanning	Control Button
Data Interface	USB3.0
Cable Length (m)	2m
Power Supply Type	AC/DC Medical Power Adapter
Supply Voltage (V)	100-240V/50-60Hz
Supply Current (A)	0.7-1.5A
Storage Temperature (°C)	-10°C - 55°C

## After Sales

Replacement Warranty**	3 year ( **refer terms and conditions )
Technical support	DentCare.

# Software



Types of Scanning	Orthodontics, Implant, Restoration
Image Store	Yes
3D Data Preview	Yes
Output Files	STL, PLY, PTY (encrypted for user)
Cloud Service	Yes
Cloud Service Price	5GB/free
Direct Compatibility with Dental CAD	Exocad*
Main Image Processing Tools	Trim/Edit/Recover/Lock, etc.
Margin Line Drawing	Yes
Occlusal Match	Yes
Undercut	Yes
Data Comparison	Yes
AI Technology	Auto Tissue Remove, Overlap Correct, etc.
Software License	Free
Software Upgrade	Free
Transfer Data with API	Available
Add-on software	Orthodontic treatment simulation

## PC Requirements

CPU	Intel i7-8700(3.2GHz) and above
Memory	DDR2400 32G and above
Hard Disk	Solid state drive 120G and above
GPU	NVIDIA RTX 3060 (6G) and above
Computer Operating System	Windows 10*64 bit and above
Display	Resolution 1920×1080 and above

d-fine® **ScanPro**

## Parameters

Faster and More Accurate

**52** Sec

Ultra-fast Scan

**6** Tips

Autoclavable

**≤7** μm

Ultra-high Accuracy

**≤5** μm

Super-Precision

**192** g

Aviation Aluminum Alloy



# Product Information



Technology	Staring Scanning with Coded Structure Light
Anti Fog System	Intelligent Heating
Accuracy	≤7μm
Precision	≤5μm
Handpiece Weight	138g (192g with cable)
Handpiece Dimension	221x27x25mm
Handpiece Enclosure	Aviation Aluminum Alloy
Scan Field	18x16mm
Scan Depth	0-20mm
True Color	Full HD
Tips	x6 (Autoclavable)
Tip Autoclave Cycle	50-100 times
Scanning Control	Button
Motion Sensing	Support
Cooling	Turbo Fan
Calibrator	Automatic
Data Interface	USB3.0
Cable Length (m)	1.85m

## After Sales

Replacement Warranty**	3 year ( **refer terms and conditions )
Technical support	DentCare®





# Software

Types of Scanning	Orthodontics, Implant, Restoration
Image Store	Yes
3D Data Preview	Yes
Output Files	STL, PLY, PTY (encrypted for user)
Cloud Service	Yes
Cloud Service Price	5GB/free
Direct Compatibility with Dental CAD	Exocad*
Main Image Processing Tools	Trim/Edit/Recover/Lock, etc.
Margin Line Drawing	Yes
Occlusal Match	Yes
Undercut	Yes
Data Comparison	Yes
AI Technology	Auto Tissue Remove, Overlap Correct, etc.
Software License	Free
Software Upgrade	Free
Transfer Data with API	Available
Add-on software	Orthodontic treatment simulation

# PC Requirements

CPU	Intel i7-8700(3.2GHz) and above
Memory	DDR2400 32G and above
Hard Disk	Solid state drive 120G and above
GPU	NVIDIA RTX 3060 (6G) and above
Computer Operating System	Windows 10*64 bit and above
Display	Resolution 1920×1080 and above

d-fine® **ScanPro**

# Plug and Play

No need for multiple cables and power adapter sockets!  
Connect to PC with just one cable!

Scanner cart with touch screen (Available on request for both  
Scan plus & Scan pro)





## Product Features

dfine® scan plus | scan pro



AI technology, much smarter  
improve a lot of scanning experience



3 different tips (dfine scan plus), meet more demands of  
different applications



Much smaller, very easy to operate



Clear margin line, high accuracy



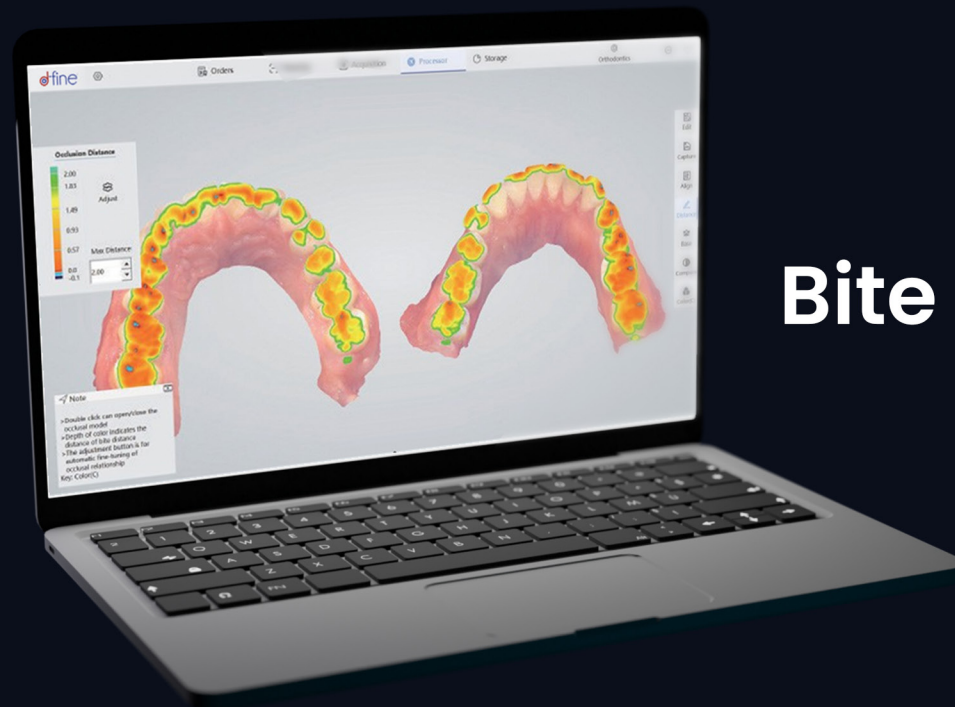
Fast scanning speed, easy to learn and use



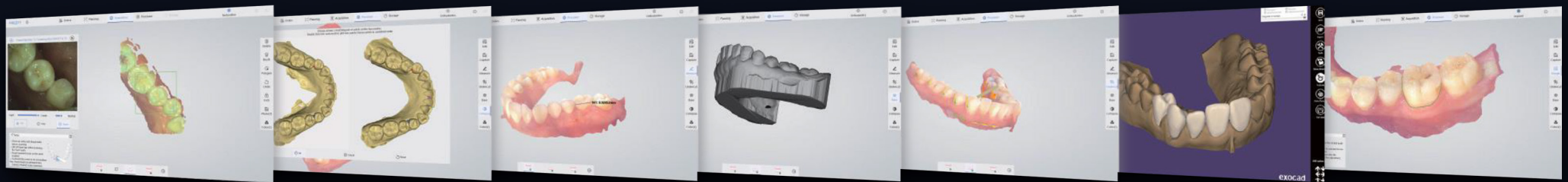
True color scan and HD display



Patented Technology



# Bite Check



2D Image Store

Case Comparison

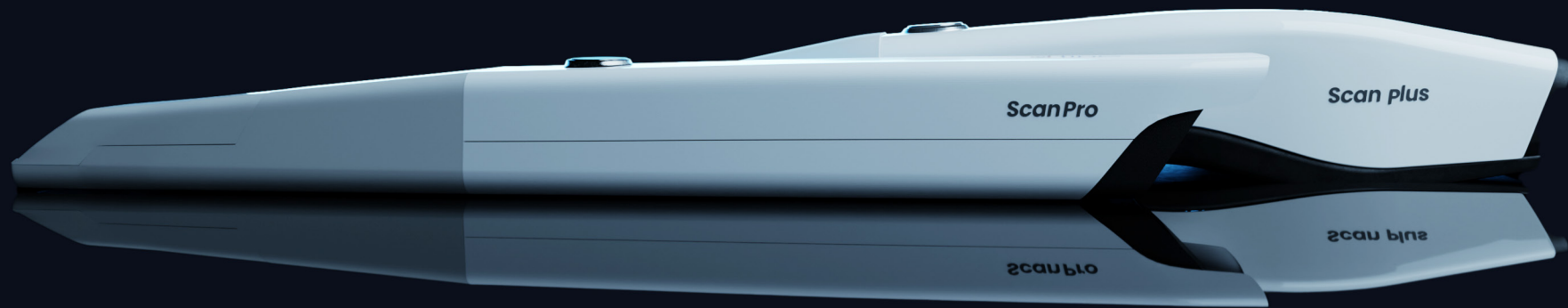
Teeth Measurement

Base Adding

Undercut

Direct Export  
into Exocad\*

Margin Line Drawing



# Application Features

d|fine® scan plus | scan pro



## High resolution and true image

Reproduce the real state of teeth, Accurate anatomical features, 3D high-definition color, visual communication, Easy and exciting treatment experience



## Case selection and finalized report

Automatically prepare case reports to laboratories. Various options to select in the report, such as bridge or crown. Convenient tools for clinics and laboratories



## Ergonomics redefined

Light weight scanners which are easy to grip and operate for long periods. Unique design for a comfortable scanning experience.



## Various range of software

Clear and easy margin line drawing  
Preoperative scan available for implant and restoration, Comparison of two sets of data such as denture and full arch, Enhanced scanning option for Veneer



## Multi-platform access case

3D preview allows access via mobile phones, tablets and laptops Share cases with patients immediately after scanning, Fully prepared case reports to laboratories, Click the link directly to EXOCAD



# Applications

## Restoration

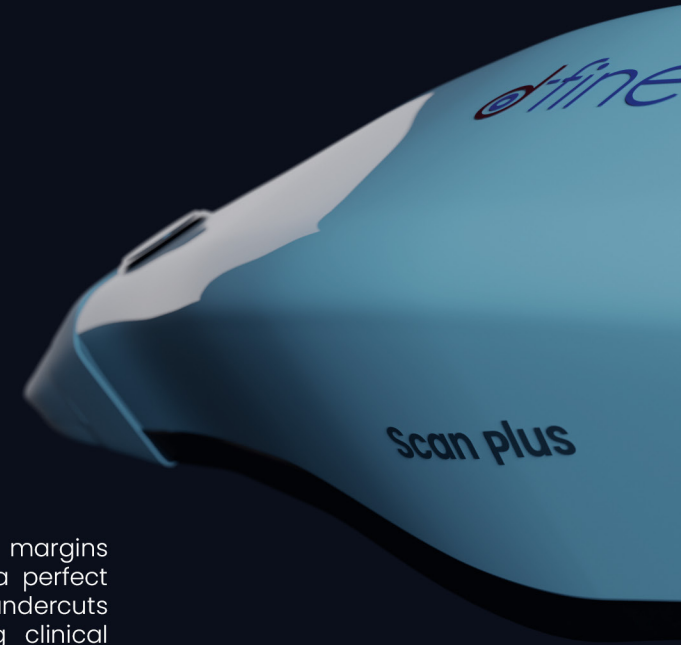
Ability to define and draw the preparation margins makes it easy for the technician to design a perfect fitting restoration. The clinician can identify undercuts and check for occlusal clearance, ensuring clinical success of the restoration.

## Implant

Fast scanning with a large field of view and ability to capture increased depths of the gingival cuff. Can easily capture metal abutments and scan bodies for a comfortable scanning experience.

## Orthodontics

High accuracy of the full dentition, can visualise the real state of the dental arches. Orthodontic simulation can help patients visualise and understand the treatment plan. Comparison of scans possible to monitor treatment.






Grab This Amazing Experience **NOW!**  
from [dentcareshop.com](https://dentcareshop.com)



 **Technical Support**

 [csupport@nesmedicorp.com](mailto:csupport@nesmedicorp.com)

 +91 9744078181